

S.W. 1/4 OF SECTION 29, T.7N., R.1W., S.L.B. & M.

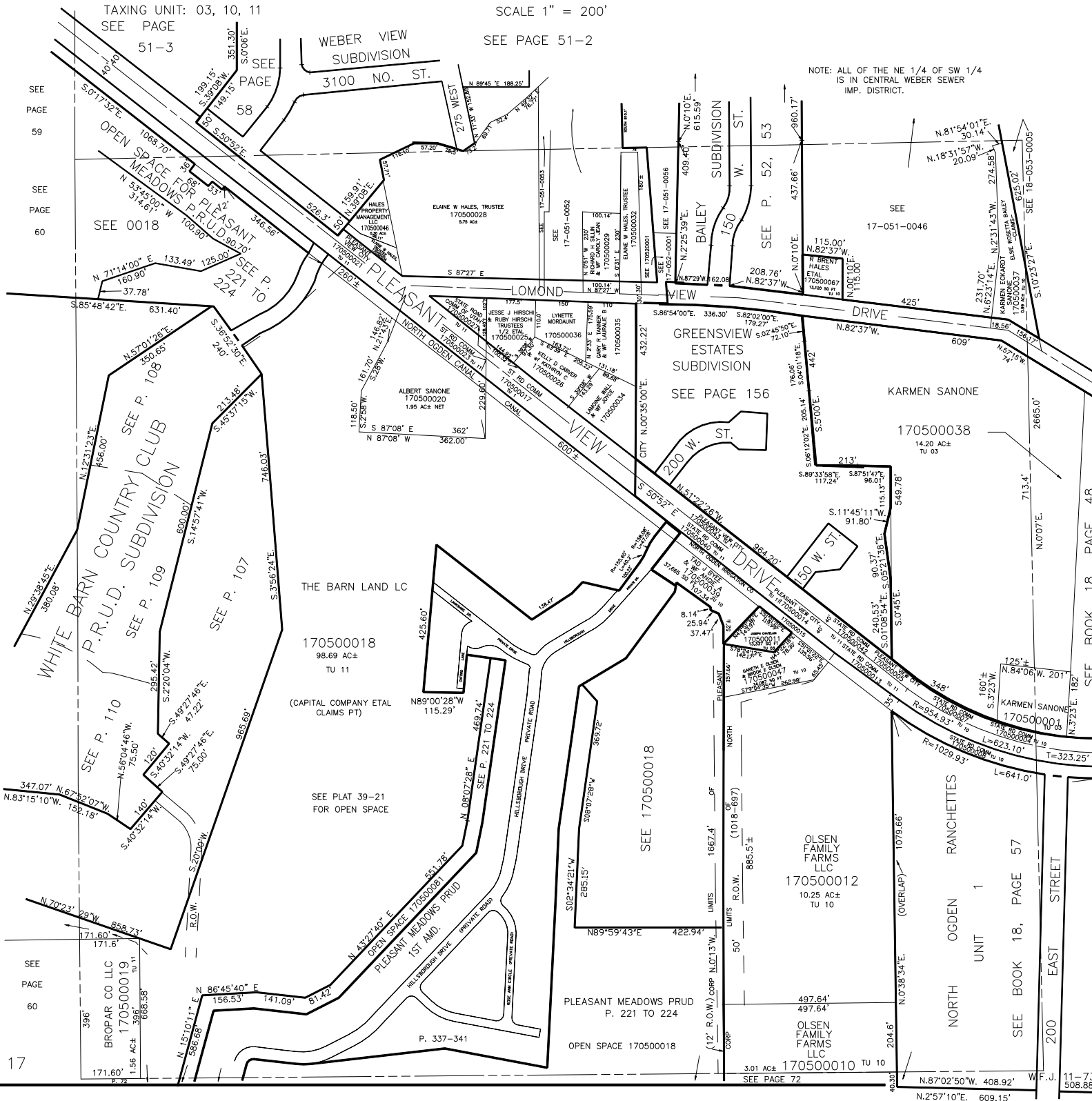
IN NORTH OGDEN CITY, TOWN OF PLEASANT VIEW, WEBER COUNTY

SCALE 1" = 200'

SEE PAGE 51-2

TAXING UNIT: 03, 10, 11  
SEE PAGE 51-3

NOTE: ALL OF THE NE 1/4 OF SW 1/4 IS IN CENTRAL WEBER SEWER IMP. DISTRICT.



17

SEE BOOK 18, PAGE 48

SEE BOOK 18, PAGE 57

11-73  
508.88'